

T O U R

Arles and Vincent Van Gogh

Vincent Van Gogh arrived in Arles in February 1888. This was the start of an intense period of activity for the artist, in the Mediterranean light. Indeed, it was his most productive era and during his 15 months in Arles, Van Gogh produced over 300 paintings and drawings thus forging one of the most important periods in the history of art. In May 1889 Vincent left Arles for the Saint-Rémy-de-Provence asylum leaving the name of Vincent Van Gogh linked to that of Arles forever.



Café Terrace at Night:

Kröller-Müller Museum.
Otterlo - Holland.

Panels representing each of these works have been placed at the spot where Van Gogh would have placed his easel.



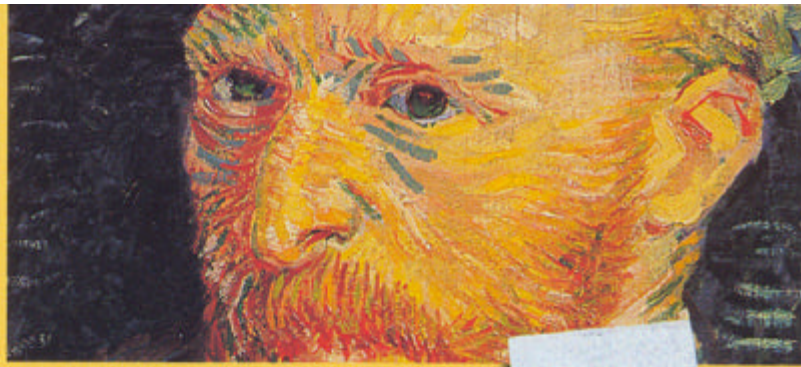
Langlois Bridge with Washerwomen:

Kröller-Müller Museum.
Otterlo - Holland.

Letters from Vincent Van Gogh

The first letter from Vincent to his brother dates from August 1872. The last, unfinished, was found in the painter's pocket after he committed suicide in July 1890.

Vincent wrote regularly to his brother Theo over eighteen years. These letters bear witness to his lucidity and the strict demands he made on himself.



▲ **Café Terrace at Night** ①

September 1888. Place du Forum.

▲ **The Trinquetaille Bridge** ②

October 1888. Trinquetaille bridge

▲ **Starry night over the Rhone** ③

September 1888. Quai du Rhône.

▲ **The yellow house** ④

September 1888. Place Lamartine. Van Gogh rented this house in May 1888. It was bombed in 1944.

▲ **The Amphitheatre** ⑤

October 1888.

▲ **The Old Mill** ⑥

September 1888. Rue Mireille.

▲ **Les Alyscamps** ⑦

October 1888, also painted by Paul Gauguin who spent several weeks in Arles with Van Gogh.

▲ **Public Park at Arles** ⑧

October 1888. Boulevard des Lices. Van Gogh also painted the public gardens which used to be on Place Lamartine.

▲ **Courtyard of the hospital at Arles** ⑨

April 1889. Espace Van Gogh.

▲ **Langlois Bridge with Washerwomen** ⑩

March 1888. Route du Pont de Langlois. The bridge was later moved to the south of the city.

